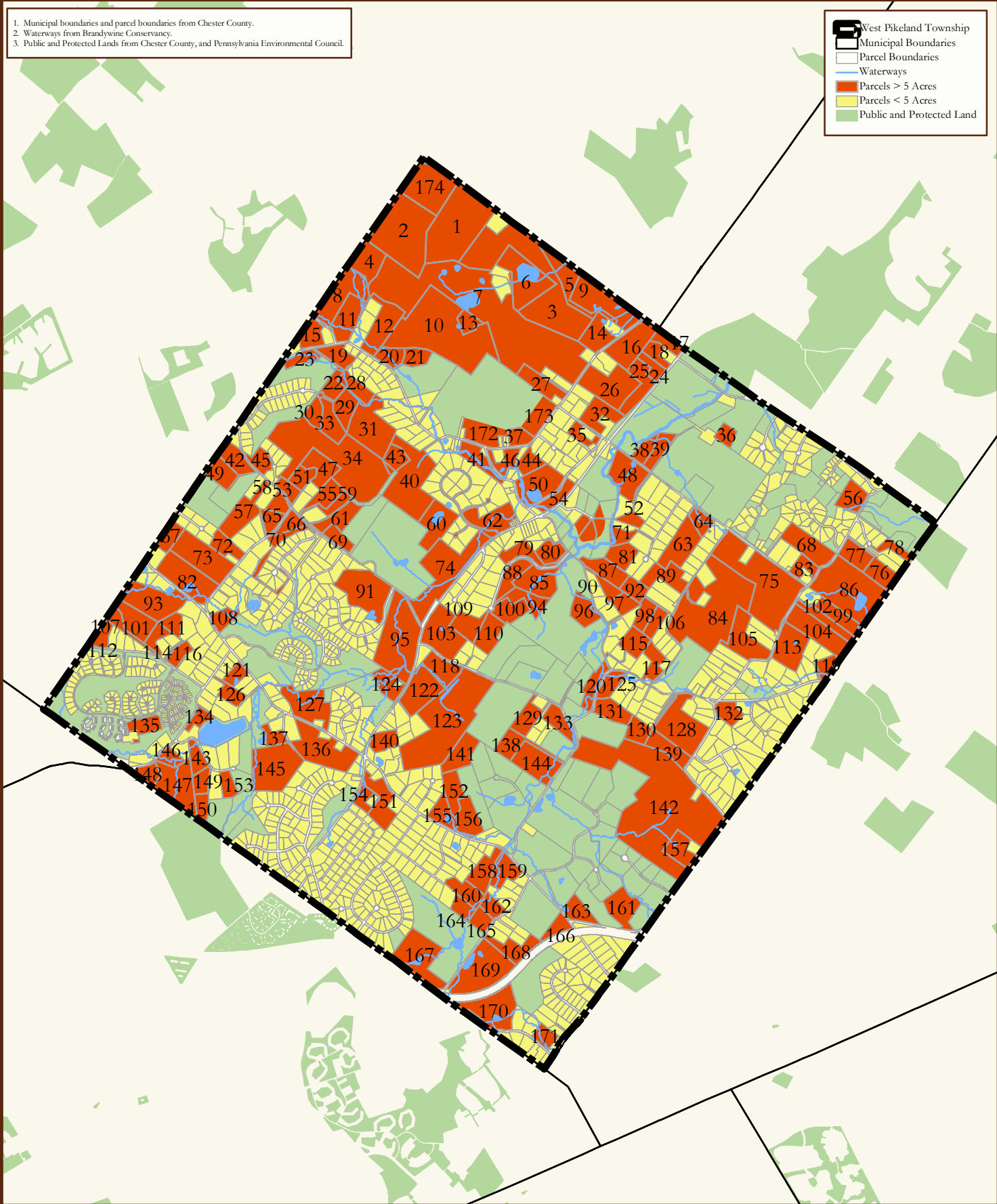


1. Municipal boundaries and parcel boundaries from Chester County.
2. Waterways from Brandywine Conservancy.
3. Public and Protected Lands from Chester County, and Pennsylvania Environmental Council.

West Pikeland Township

- Municipal Boundaries
- Parcel Boundaries
- Waterways
- Parcels > 5 Acres
- Parcels < 5 Acres
- Public and Protected Land



DEVELOPABLE PARCELS

West Pikeland Township
Chester County, Pennsylvania

N

0 1,000 2,000 Feet

06/05/06