

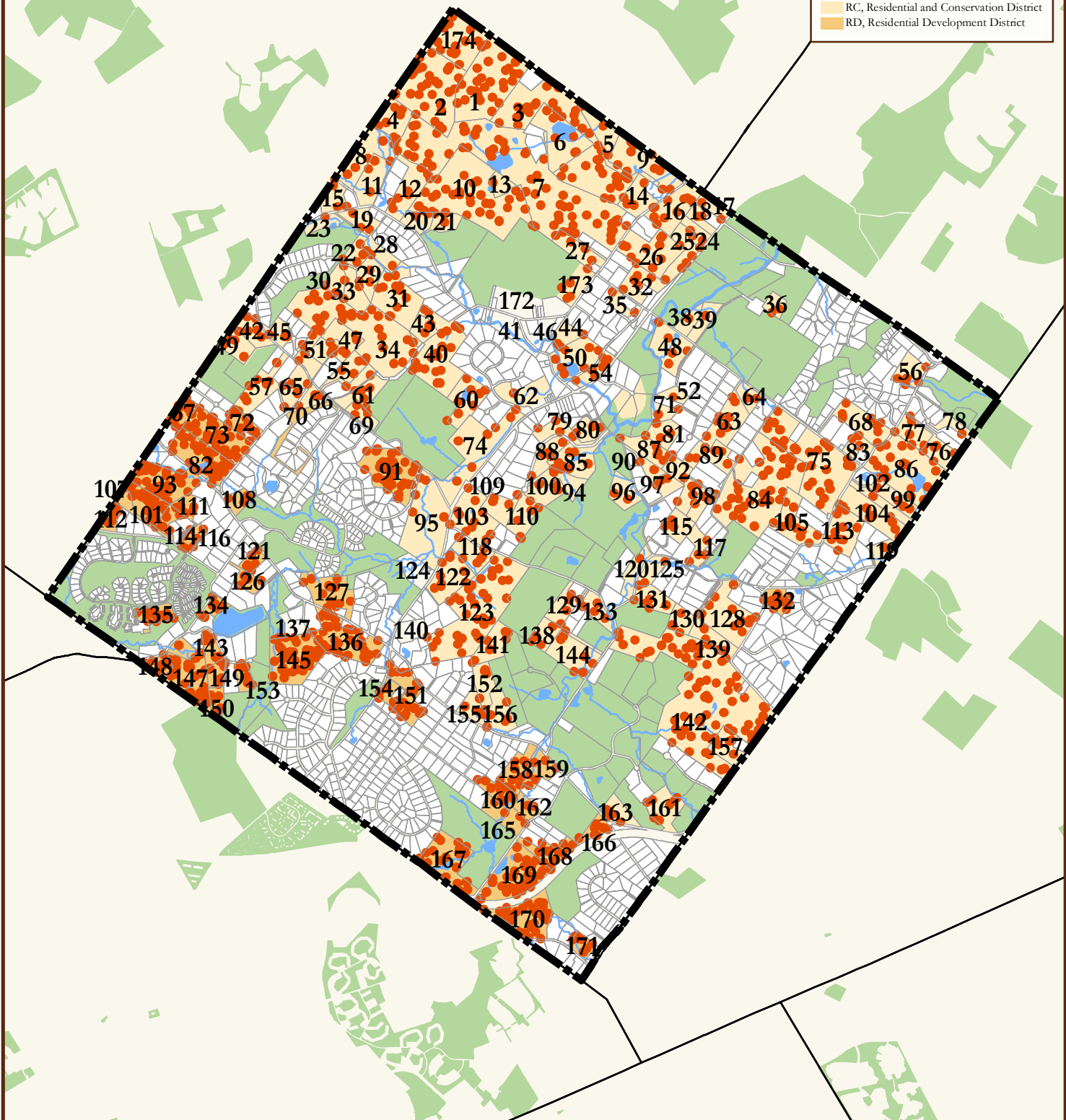
1. Municipal boundaries and parcel boundaries from Chester County.
2. Waterways from Brandywine Conservancy.
3. Public and Protected Lands from Chester County, and Pennsylvania Environmental Council.
4. Zoning digitized from Zoning map Proposed May 2004.
5. Potential Residential Development Lots created based on current ordinances.

**West Pikeland Township**

- Municipal Boundaries
- Parcel Boundaries
- Waterways
- Parcels < 5 Acres
- Potential Residential Lot
- Public and Protected Land

**Zoning**

- RC, Residential and Conservation District
- RD, Residential Development District



# POTENTIAL RESIDENTIAL DEVELOPMENT

West Pikeland Township  
Chester County, Pennsylvania

0 1,000 2,000 Feet  
06/05/06